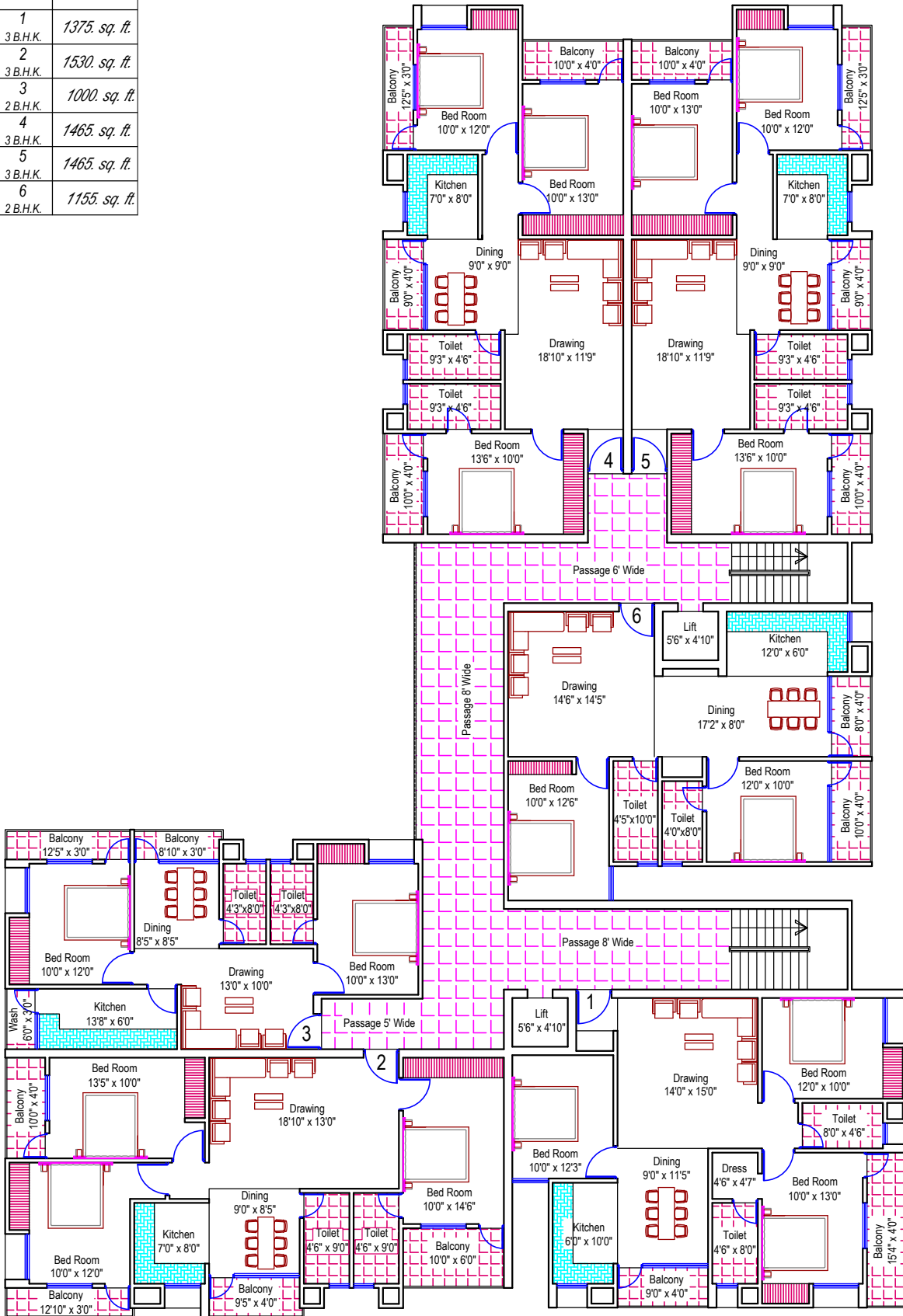
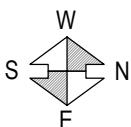


| NO | FLAT | SUPER B/U AREA |
|----|---------------|----------------|
| 1. | 1 3 B.H.K. | 1375. sq. ft. |
| 2. | 2 3 B.H.K. | 1530. sq. ft. |
| 3. | 3 2 B.H.K. | 1000. sq. ft. |
| 4. | 4 3 B.H.K. | 1465. sq. ft. |
| 5. | 5 3 B.H.K. | 1465. sq. ft. |
| 6. | 6 2 B.H.K. | 1155. sq. ft. |



TYPICAL 1st to 5th FLOOR PLAN (BLOCK - A)



PROJECT :-

SYMPHONY CONDOS PHASE 1
AT :- Boreya, Ranchi.

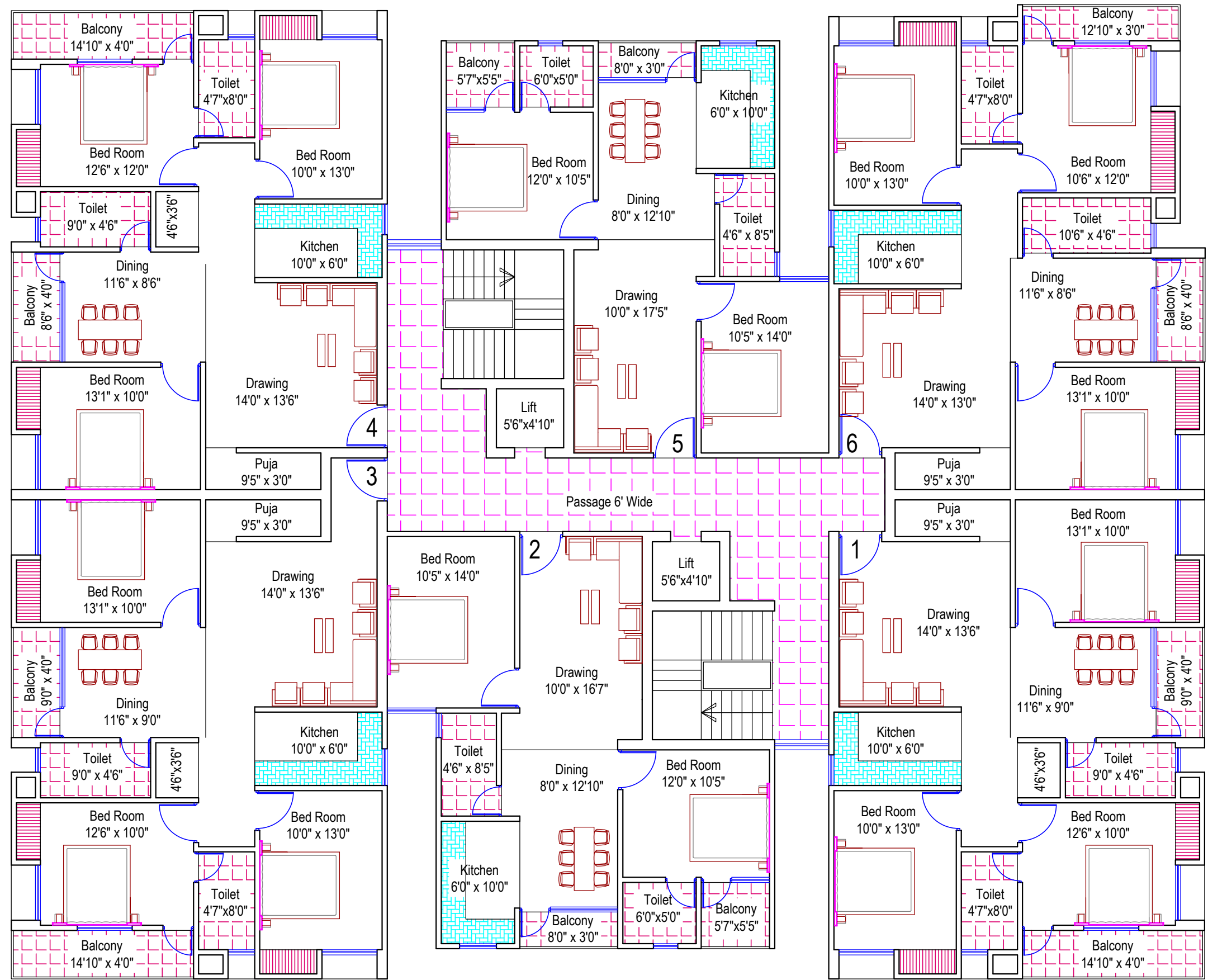
CLIENT :-

MORIAS CONSTRUCTION.
AT :- Ranchi.

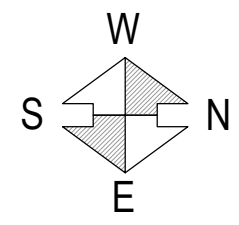


grids consultants

architect, engineer, interior, landscaping, vastu.
2nd FL, ROSHPA TOWERS, MAIN ROAD, RANCHI.
PH: 2330258, E-mail: grids_con@yahoo.com



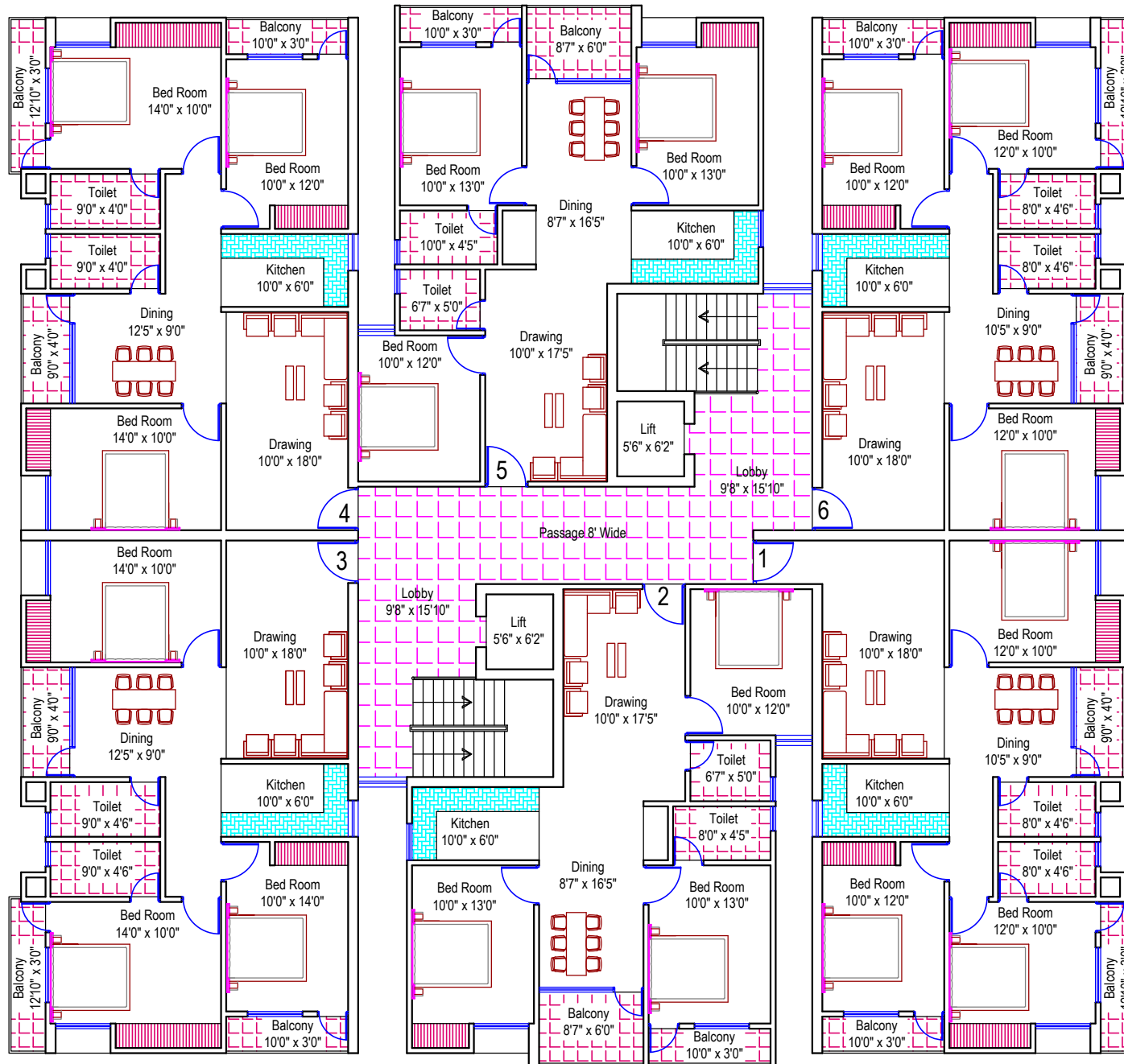
| NO | FLAT | SUPER B/U AREA |
|----|---------------|----------------|
| 1. | 1 3 B.H.K. | 1430. sq. ft. |
| 2. | 2 2 B.H.K. | 1030. sq. ft. |
| 3. | 3 3 B.H.K. | 1470. sq. ft. |
| 4. | 4 3 B.H.K. | 1430. sq. ft. |
| 5. | 5 2 B.H.K. | 1030. sq. ft. |
| 6. | 6 3 B.H.K. | 1380. sq. ft. |



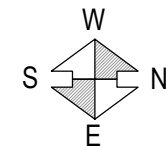
TYPICAL 1st to 5th FLOOR PLAN (BLOCK - B)

PROJECT :-
SYMPHONY CONDOS PHASE 1
 AT :- Boreya, Ranchi.

CLIENT :-
MORIAS CONSTRUCTION.
 AT :- Ranchi.



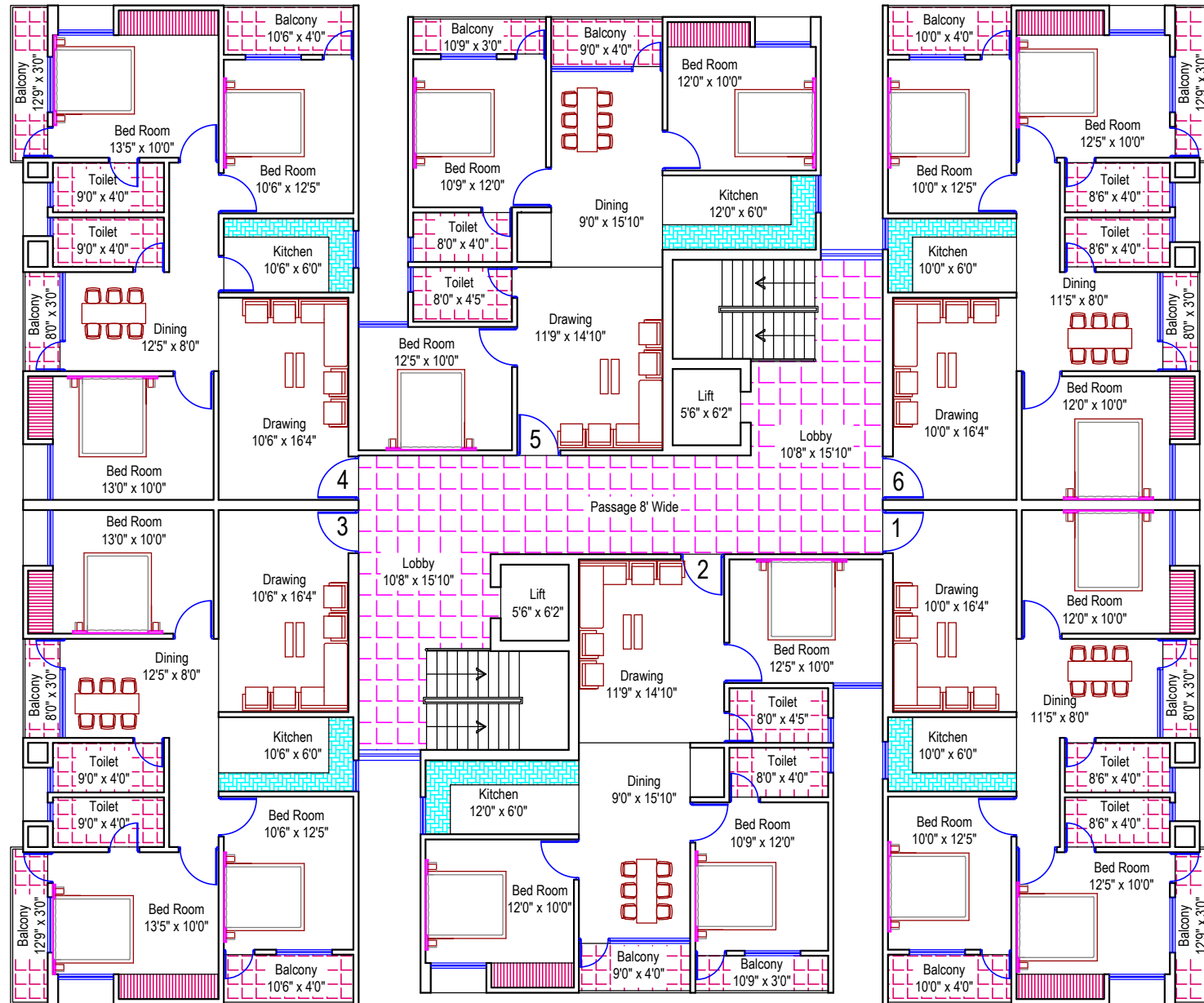
| NO | FLAT | SUPER B/U AREA |
|----|---------------|----------------|
| 1. | 1 3 B.H.K. | 1,350. sq. ft. |
| 2. | 2 3 B.H.K. | 1,270. sq. ft. |
| 3. | 3 3 B.H.K. | 1,430. sq. ft. |
| 4. | 4 3 B.H.K. | 1,430. sq. ft. |
| 5. | 5 3 B.H.K. | 1,270. sq. ft. |
| 6. | 6 3 B.H.K. | 1,325. sq. ft. |



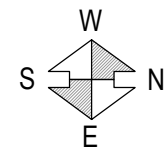
TYPICAL 1st to 5th FLOOR PLAN (BLOCK - C)

PROJECT :-
Symphony CONDOS PHASE 2
 AT :- Boreya, Ranchi.

CLIENT :-
MORIAS CONSTRUCTION.
 AT :- Ranchi.



| NO | FLAT | SUPER B/U AREA |
|----|---------------|----------------|
| 1. | 1 3 B.H.K. | 1265. sq. ft. |
| 2. | 2 3 B.H.K. | 1270. sq. ft. |
| 3. | 3 3 B.H.K. | 1340. sq. ft. |
| 4. | 4 3 B.H.K. | 1340. sq. ft. |
| 5. | 5 3 B.H.K. | 1270. sq. ft. |
| 6. | 6 3 B.H.K. | 1265. sq. ft. |



PROJECT :-
SYPHONY CONDOS PHASE 2
 AT :- Boreya, Ranchi.

CLIENT :-
MORIAS CONSTRUCTION.
 AT :- Ranchi.

TYPICAL 1st to 5th FLOOR PLAN (BLOCK - D)